



#### Product Overview

- ❖ Shallow foundation product with only 300mm of excavation required to install.
- ❖ Locked and unlocked either automatically or remotely.
- ❖ Aesthetically – multiple finishes are available.

### Cityscape Gate – Manually operated, shallow mount gate

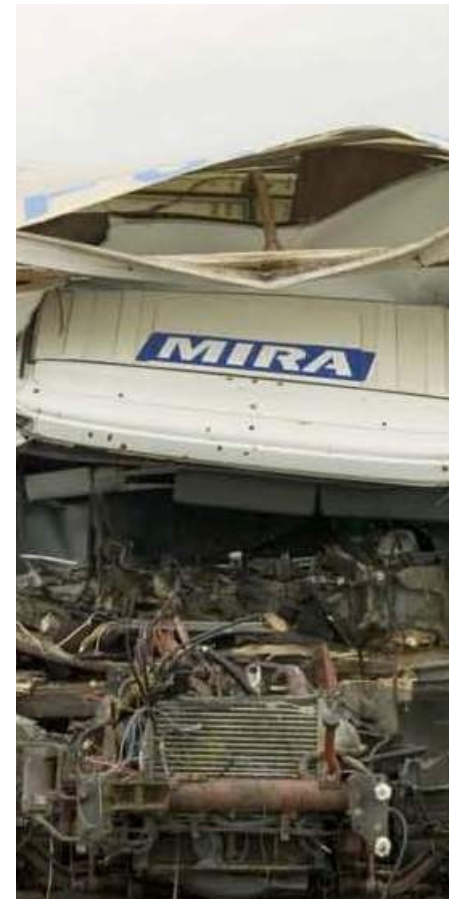
#### Statistics Table

Diameter	355mm (end posts)
Height Above Ground	920mm bar above ground
Lifting Weight	-
Foundation Depth	From 300mm
Finishes Available	RAL coated, galvanised or stainless steel
Security Rating	V/7,500(N2)/64/90:1.09/2.40 (gate tested 4.5 meters)

The Cityscape Gate is installed within a foundation of just 300mm and can protect entrances from 4 to 6 meters wide. The gate is manually opened and closed and may be secured by a manual locking mechanism. Alternatively the gate may be secured from a remote location electronically if required.

The gate is able to be opened from both approach angles. The 4.5 meter structure was recently impact tested and stopped a 7.5 tonne truck travelling at 40 mph. The Cityscape Gate is at the forefront of technology as well as sitting in a shallow foundation. The gate employs energy absorbing synthetic fibres to arrest the attacking vehicle.

Available in brushed stainless steel or a coated finish, this product can span 4m to 6m in width. This product can be specified as right or left hand hinged and can be opened in either direction depending on site requirements.



Canary Wharf Financial District



Olympic Park