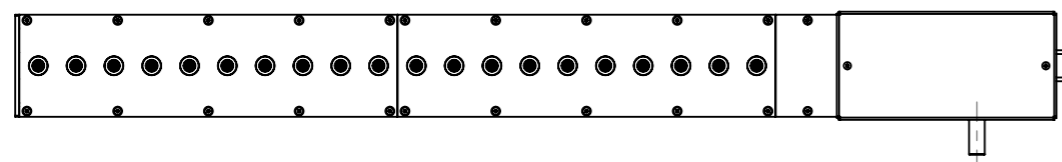
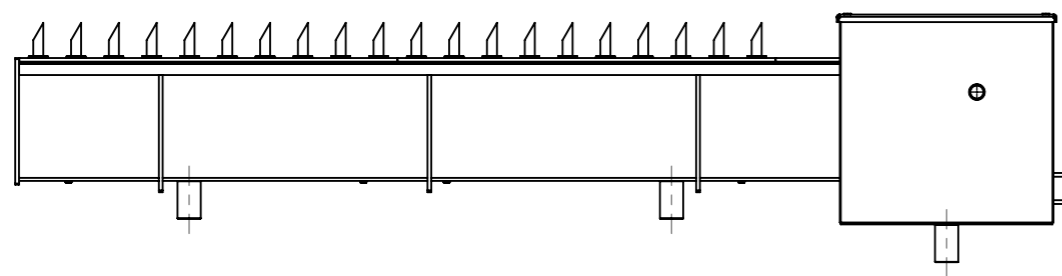
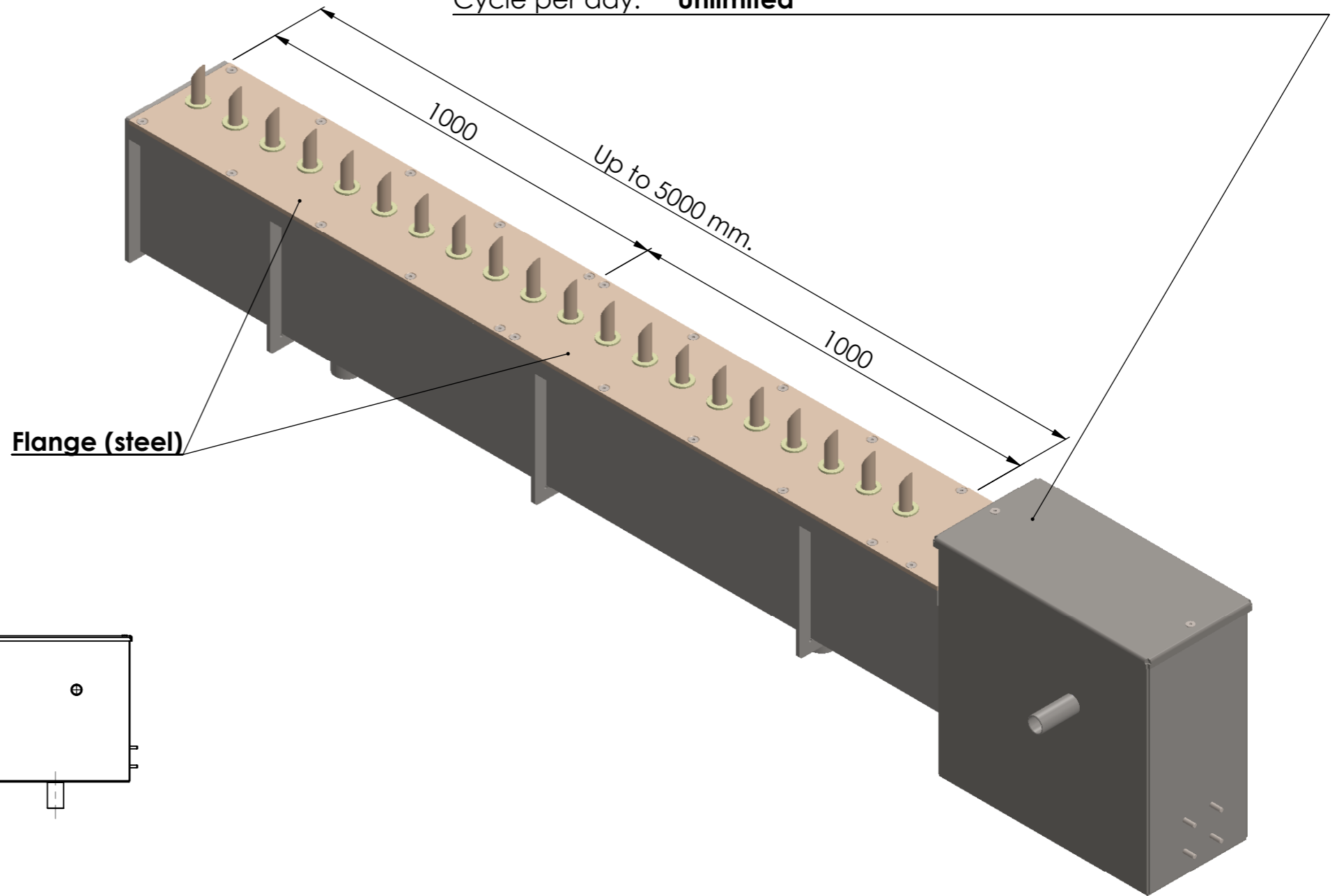




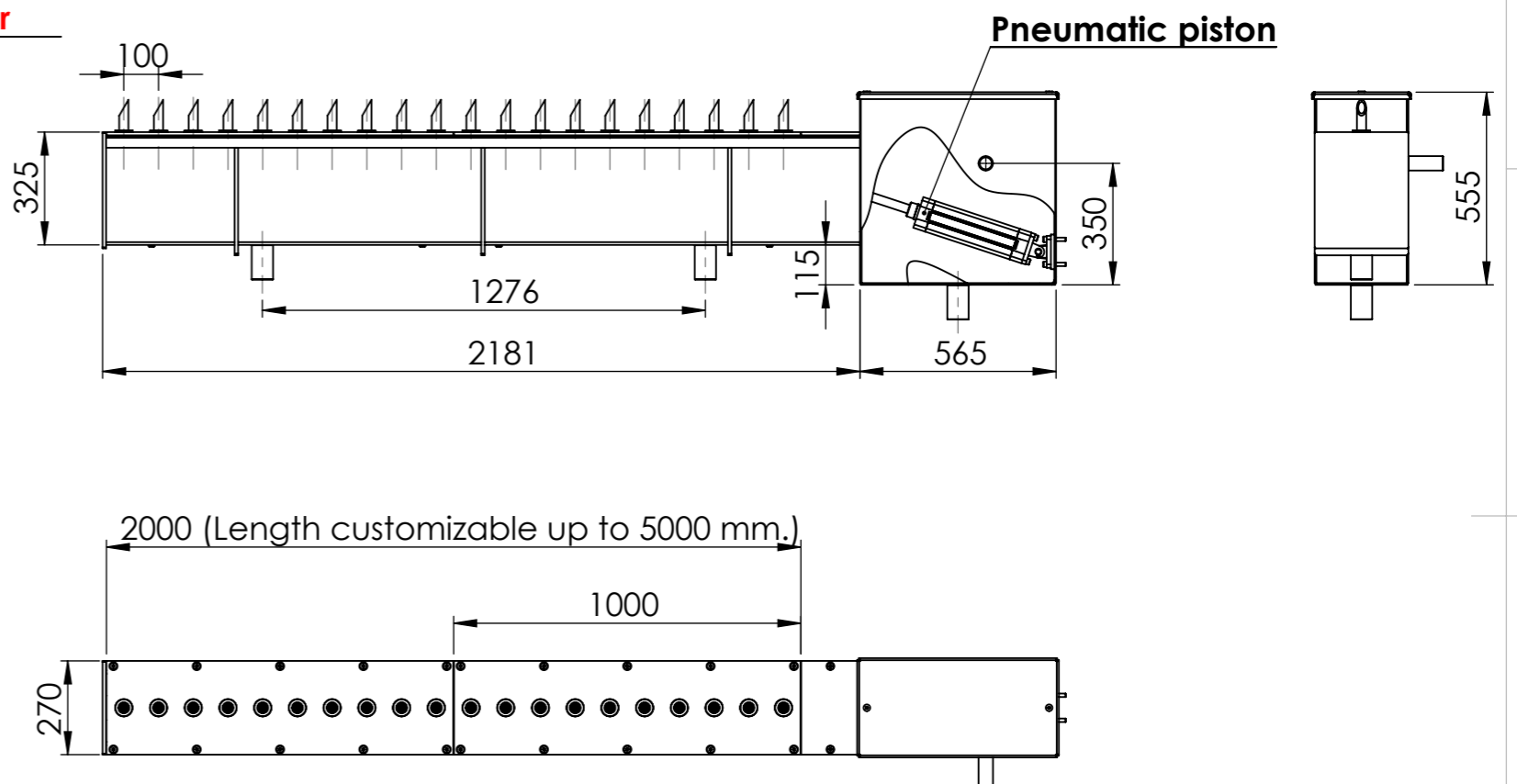
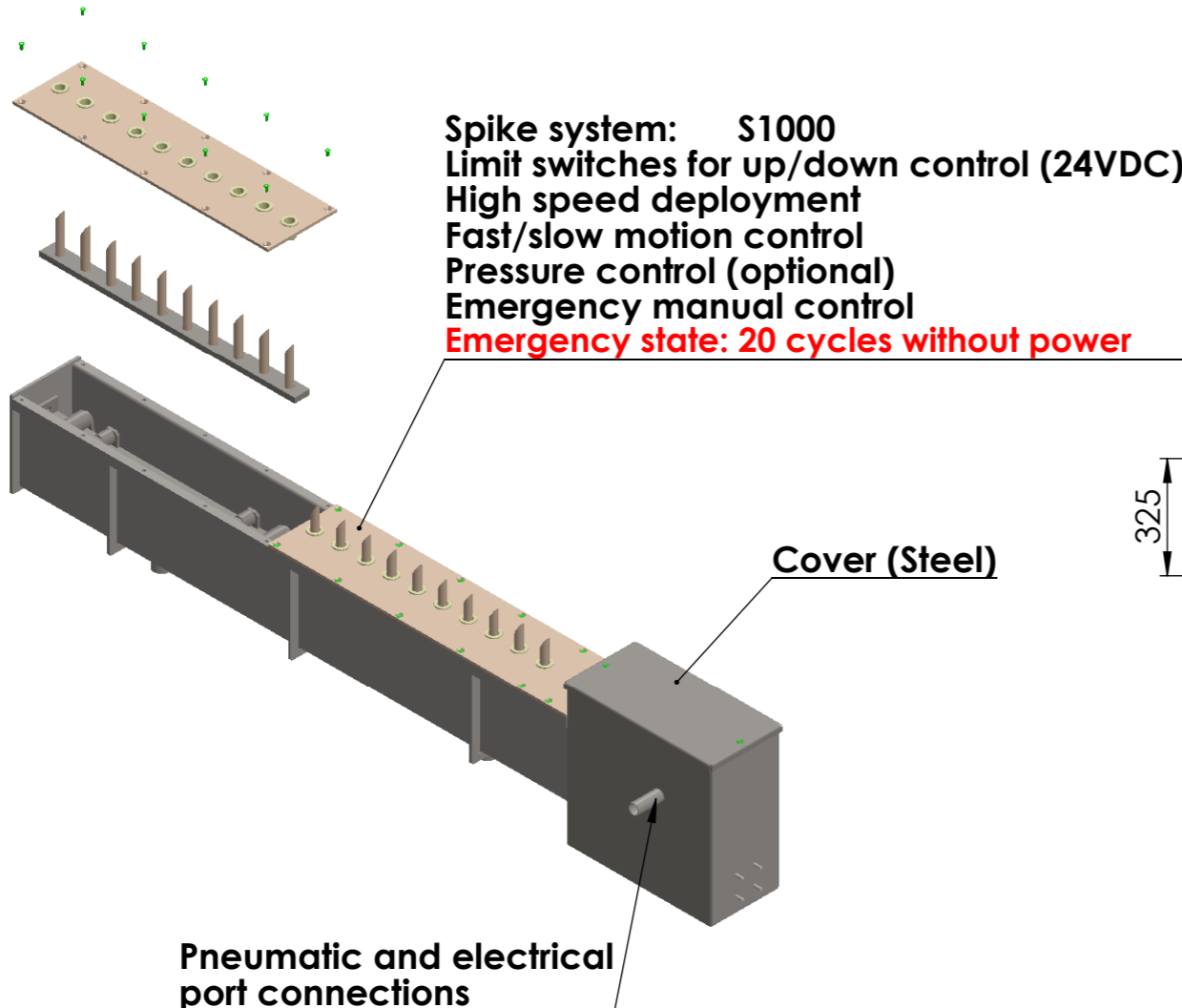
Spike system S1000

Spike system: S1000H

System type: **Active 2-way spikes**
 Mobile/Fixed: **Fixed**
 Foundation: **500 mm.**
 Speed: **From 1.5 sec.**
 Power: **3-6 Bar air pressure 240VAC - 380VAC (Compressor)**
 Cycle per day: **Unlimited**



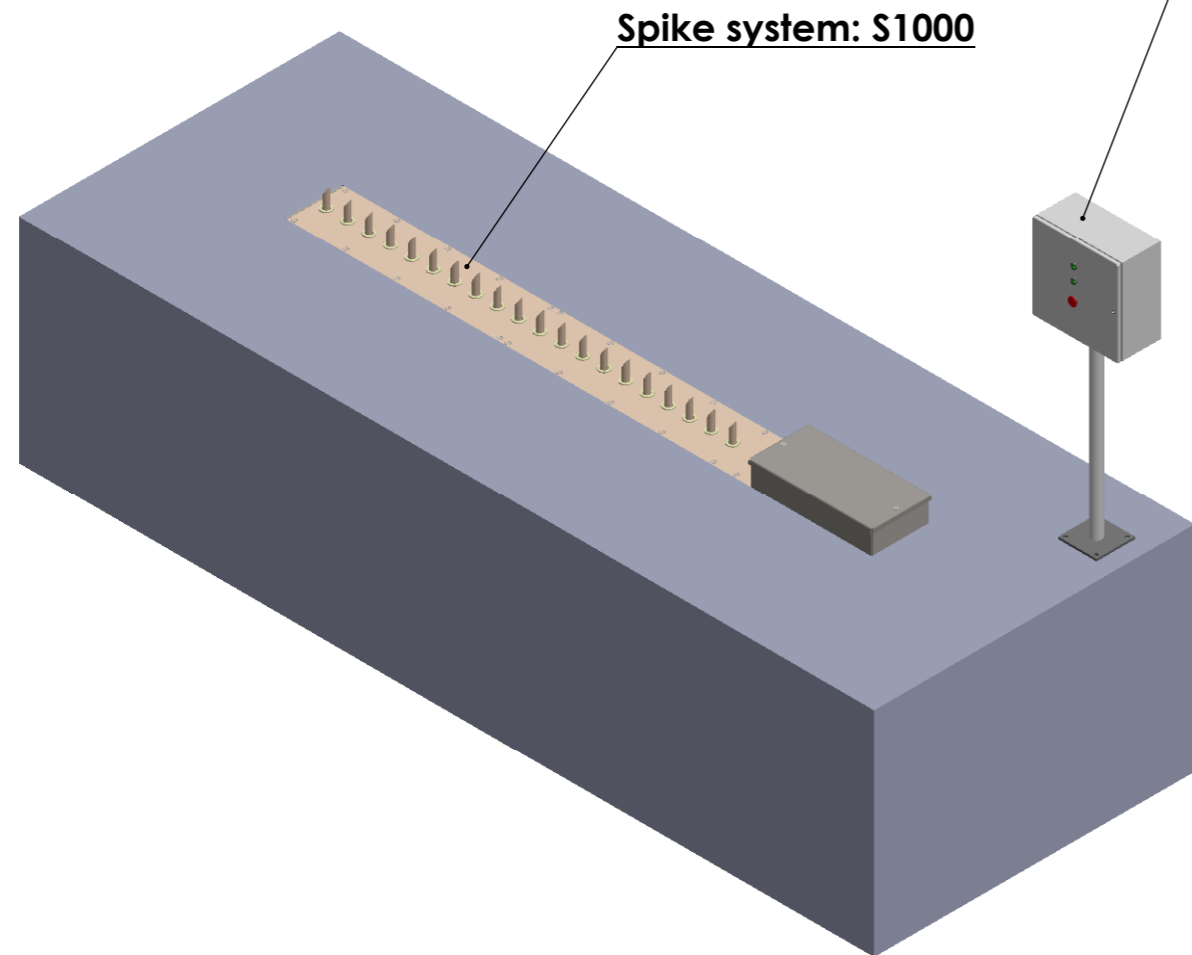
UNLESS OTHERWISE SPECIFIED: DIMENSIONS ARE IN MILLIMETERS SURFACE FINISH: TOLERANCES: ±0.1 mm. LINEAR: ±0.5 mm. ANGULAR: ±0.5°		FINISH:	Quant.	DO NOT SCALE DRAWING	REVISION
DRAWN		SIGNATURE	DATE	Project: Spike system S1000	
CHK'D				Site: www.bgibarriers.com	
APPV'D				Phone: 972-3-5500465	
MFG				Fax: 972-3-5583113	
Q.A				E-mail: info@bgibarriers.com	
		MATERIAL:		BGI INTELLIGENT BARRIER SOLUTIONS	
		WEIGHT:		DWG NO.	A3
				S1000-B.G.Ilanit-Final	
				SCALE:1:20	SHEET 1 OF 3



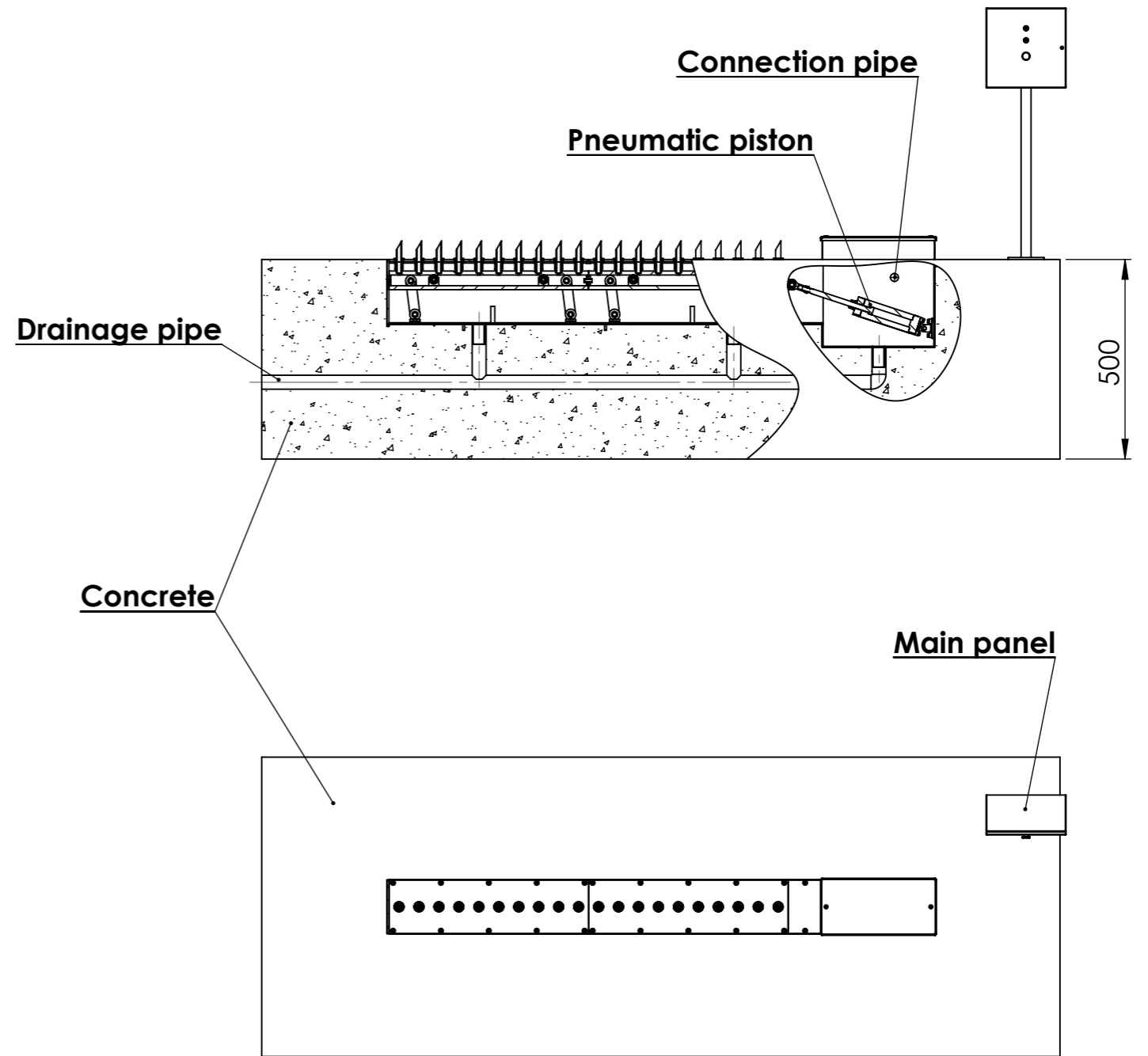
UNLESS OTHERWISE SPECIFIED: DIMENSIONS ARE IN MILLIMETERS SURFACE FINISH: TOLERANCES: ±0.1 mm. LINEAR: ±0.5 mm. ANGULAR: ±0.5°		FINISH:	Quant.	DO NOT SCALE DRAWING	REVISION
DRAWN		NAME	SIGNATURE	DATE	Project: Spike system S1000 BGI Intelligent Barrier Solutions Site: www.bgibarriers.com Phone: 972-3-5500465 Fax: 972-3-5583113 E-mail: info@bgibarriers.com BGI INTELLIGENT BARRIER SOLUTIONS
CHK'D					
APPV'D					
MFG					
Q.A					
		MATERIAL:		DWG NO.	A3
		WEIGHT:		SCALE:1:20	SHEET 2 OF 3



Main control panel with optional connections to:
 Remote panel
 Remote control
 PC/HMI/OPC connection
 Cart reader/keypad
 Mobile phone control
 Alarm message



Spike system: S1000



UNLESS OTHERWISE SPECIFIED: DIMENSIONS ARE IN MILLIMETERS SURFACE FINISH: TOLERANCES: ±0.1 mm. LINEAR: ±0.5 mm. ANGULAR: ±0.5°		FINISH:	Quant.	DO NOT SCALE DRAWING	REVISION
DRAWN		NAME	SIGNATURE	DATE	Project: Spike system S1000
CHK'D					BGI Intelligent Barrier Solutions Site: www.bgibarriers.com Phone: 972-3-5500465 Fax: 972-3-5583113 E-mail: info@bgibarriers.com
APP'VD					
MFG					
Q.A					
		MATERIAL:		DWG NO.	A3
		WEIGHT:		S1000-B.G.Ilanit-Final	
				SCALE:1:50	SHEET 3 OF 3