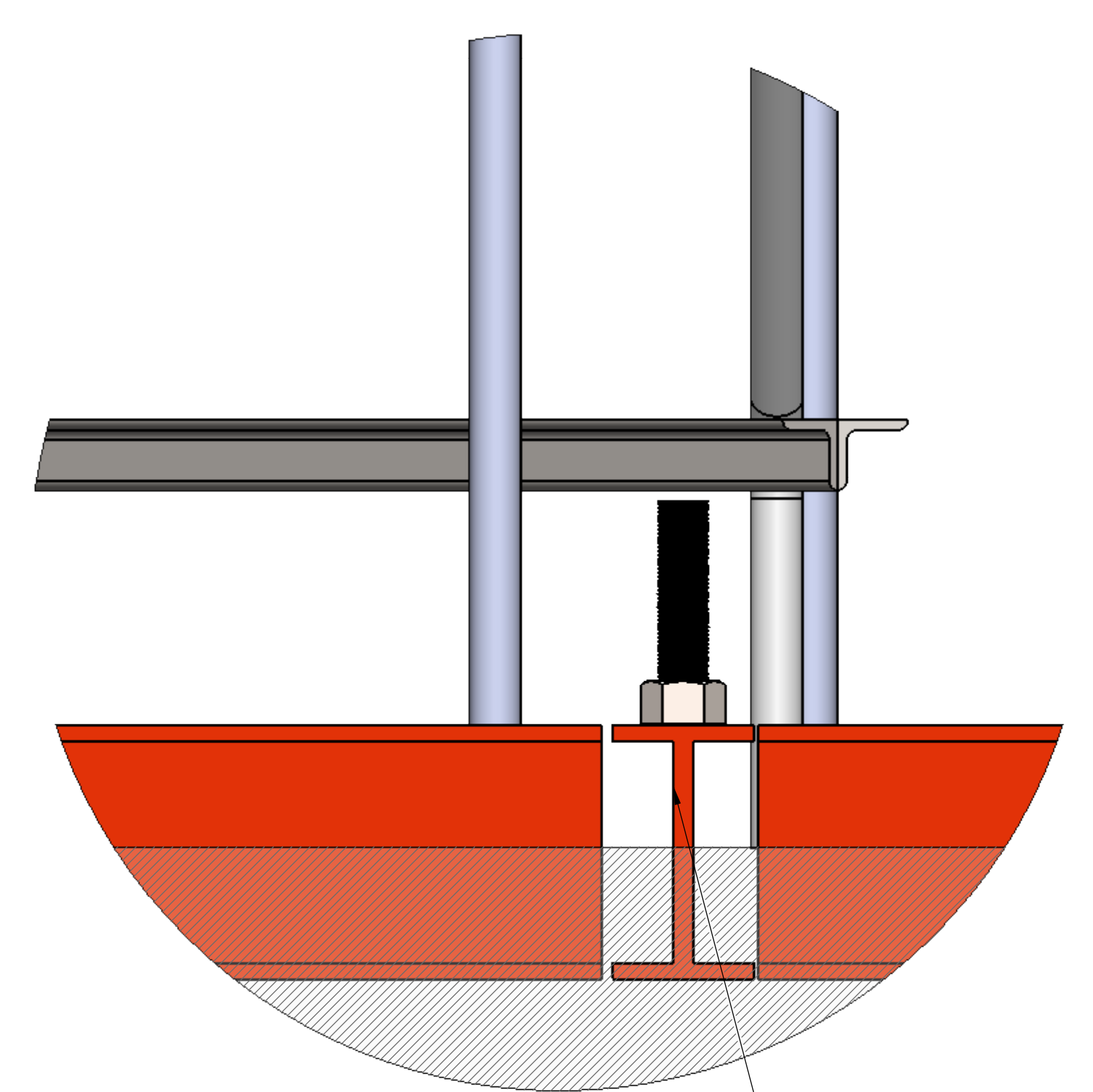
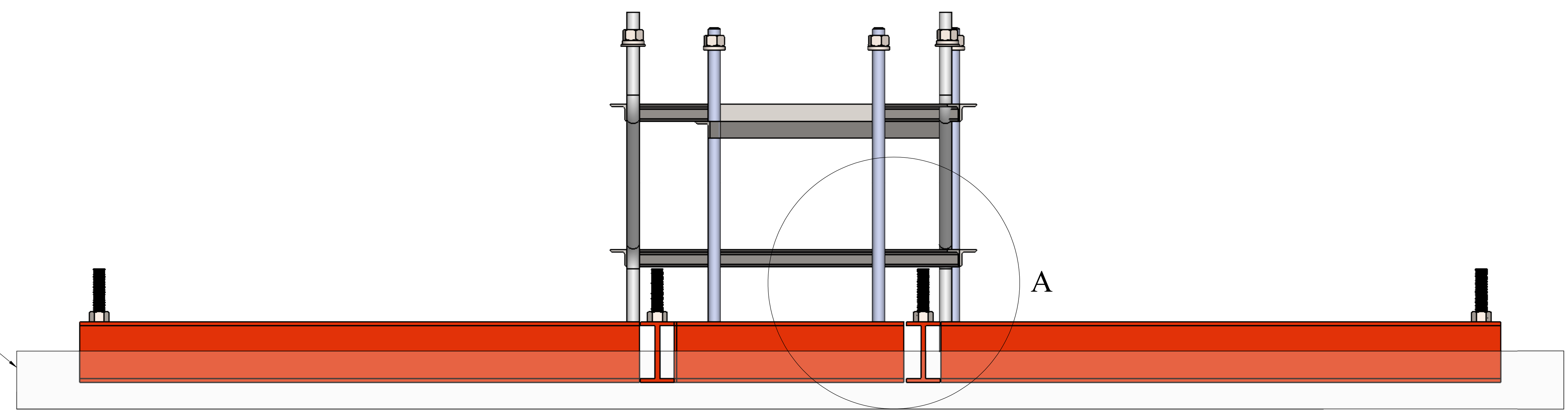


24 23 22 21 20 19 18 17 16 15 14 13 12 11 10 9 8 7 6 5 4 3 2 1

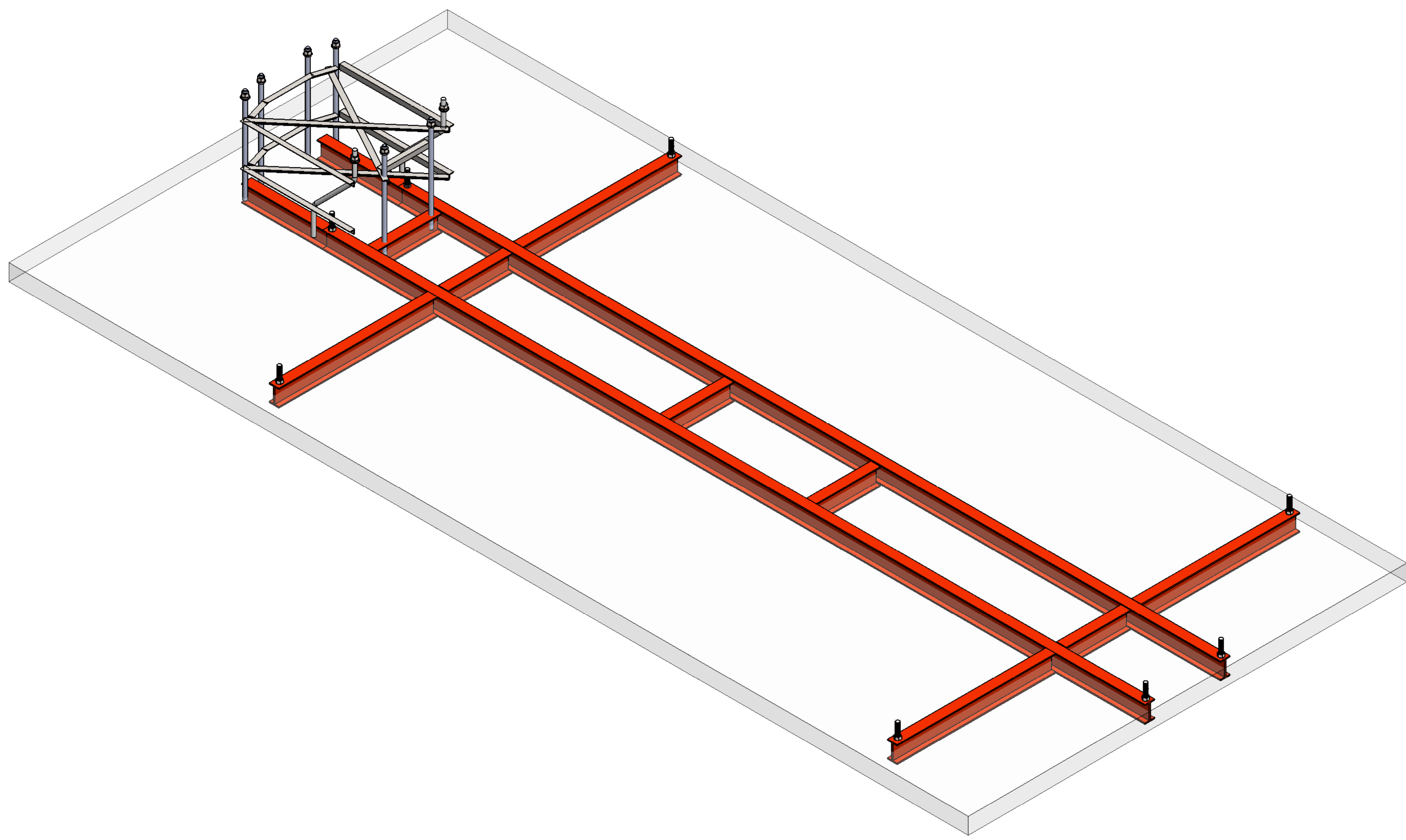
T R P N M L K J H G F E D C B A

MAKE CONCRETE HALF OF I SECTION



I SECTION

DETAIL A
SCALE 2 : 5



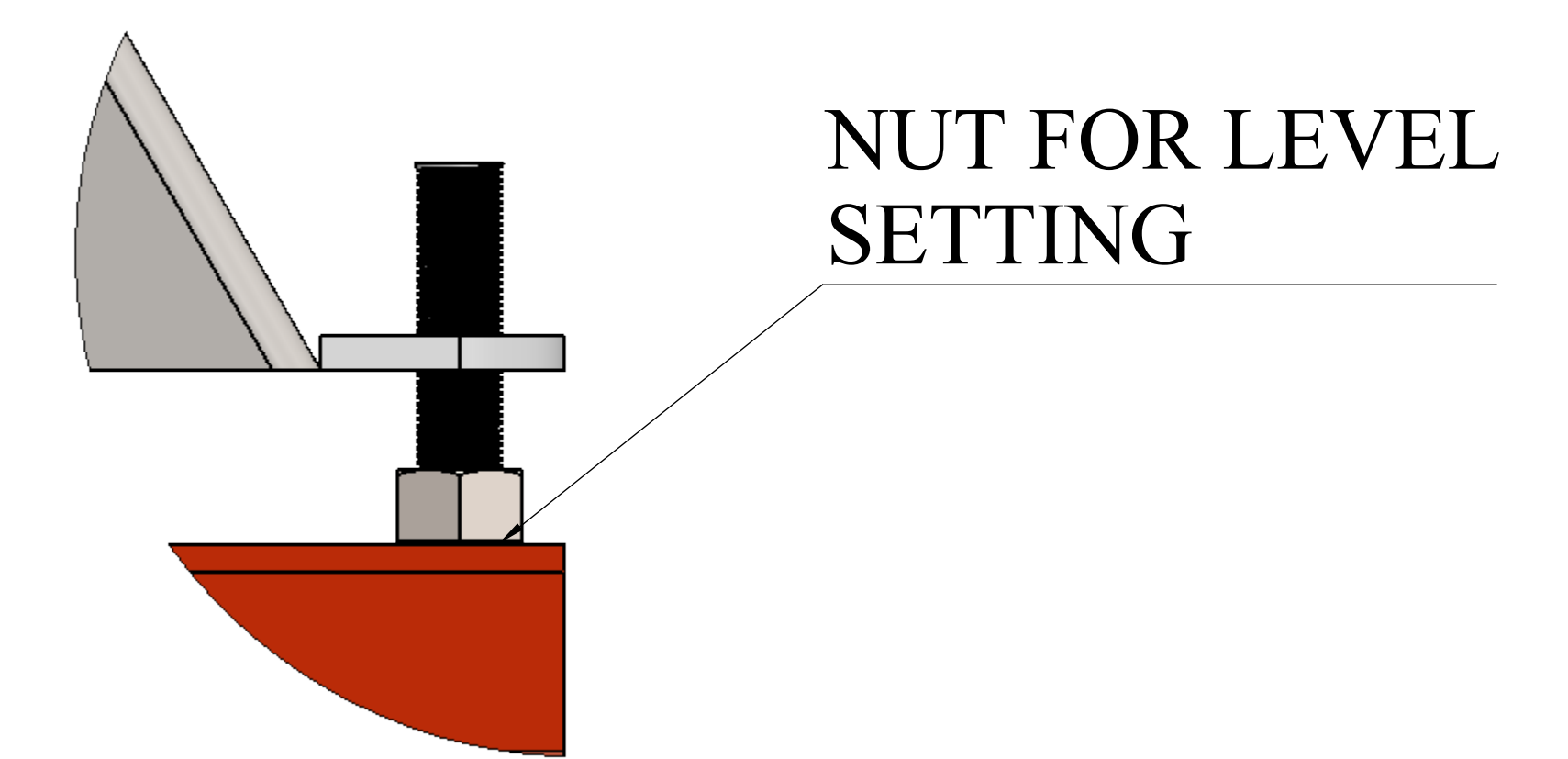
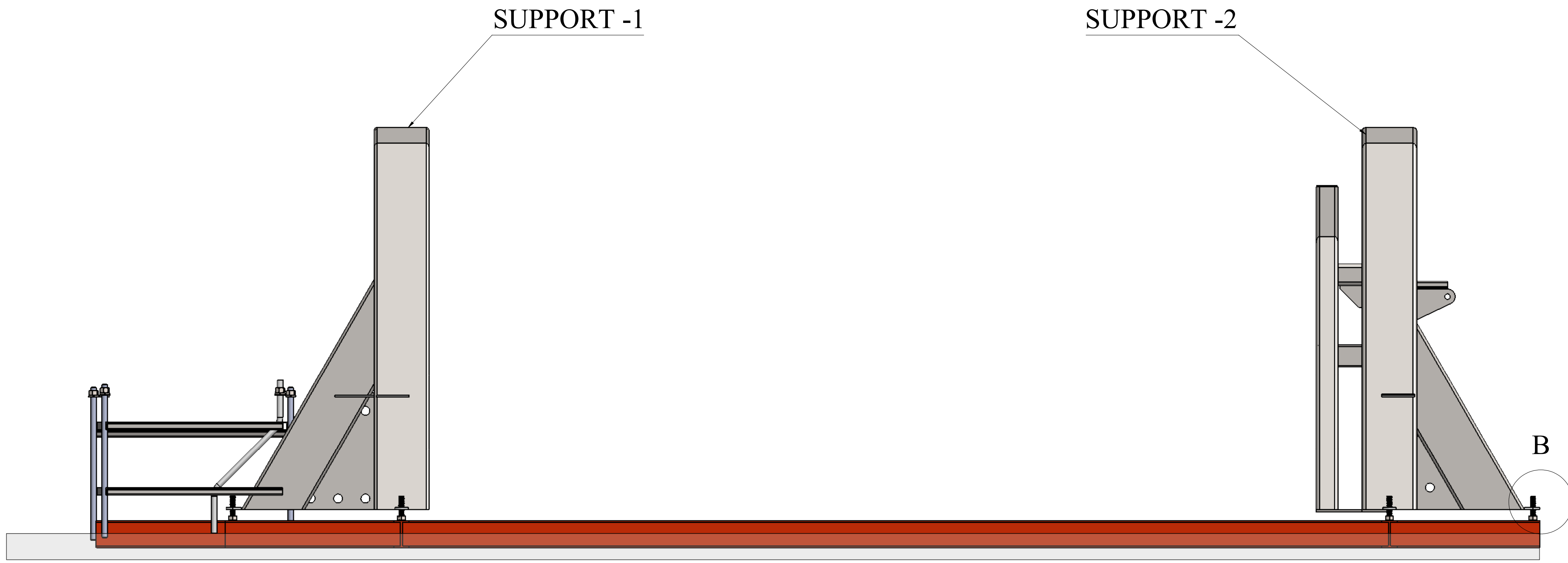
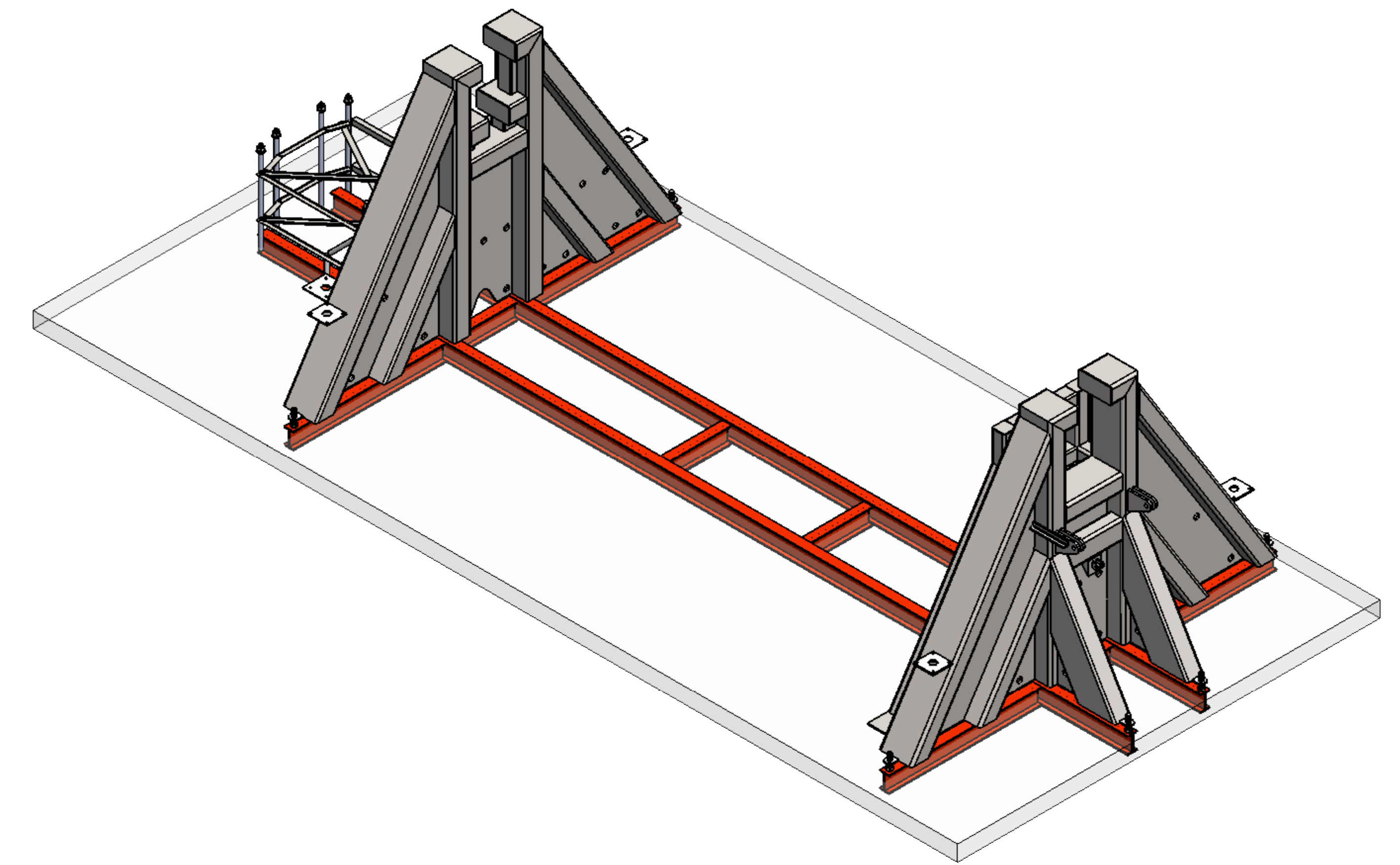
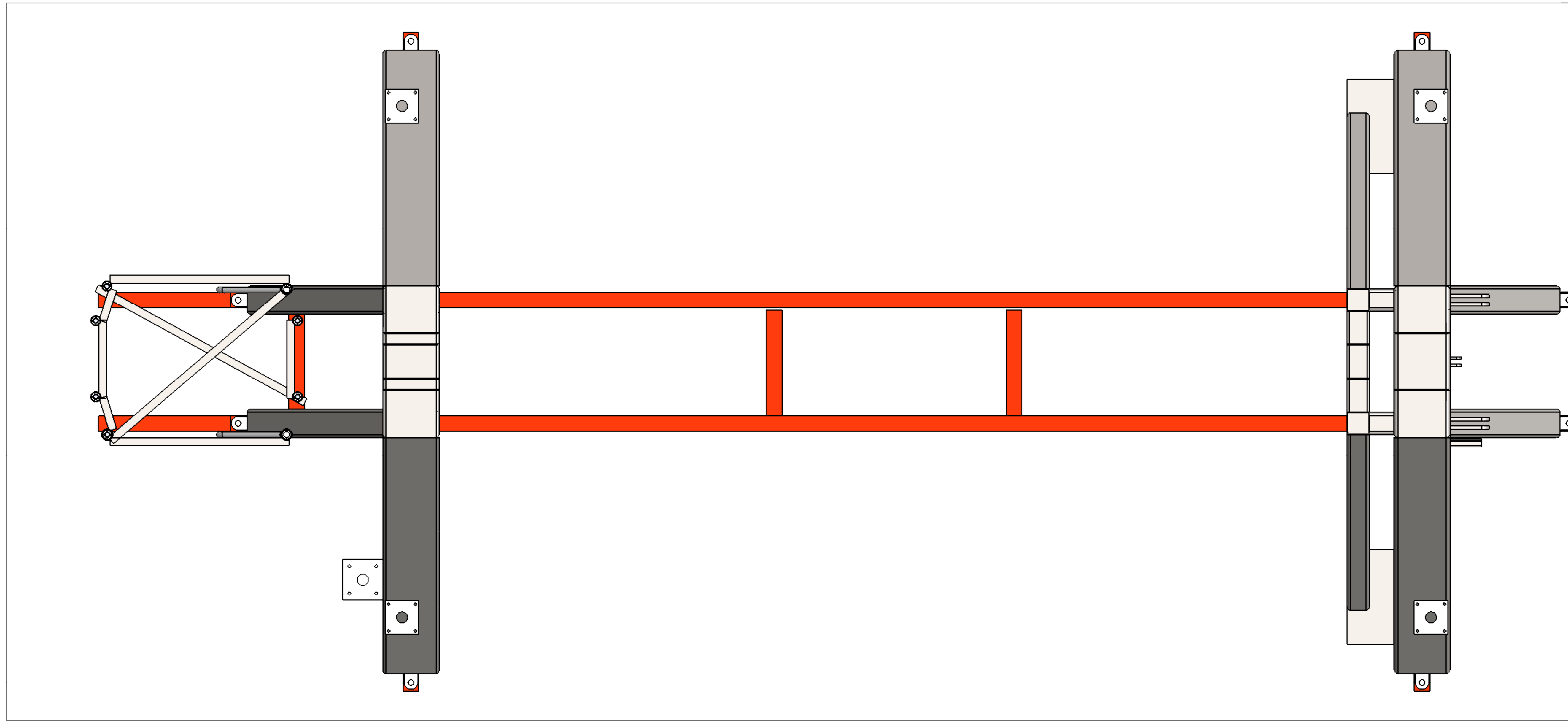
NOTE :-
1-CHECH LEVELING

24 23 22 21 20 19 18 17 16 15 14 13 12 11 10 9 8 7 6 5 4 3 2 1

T R P N M L K J H G F E D C B A

24 23 22 21 20 19 18 17 16 15 14 13 12 11 10 9 8 7 6 5 4 3 2 1

T
R
P
N
M
L
K
J
H
G
F
E
D
C
B
A

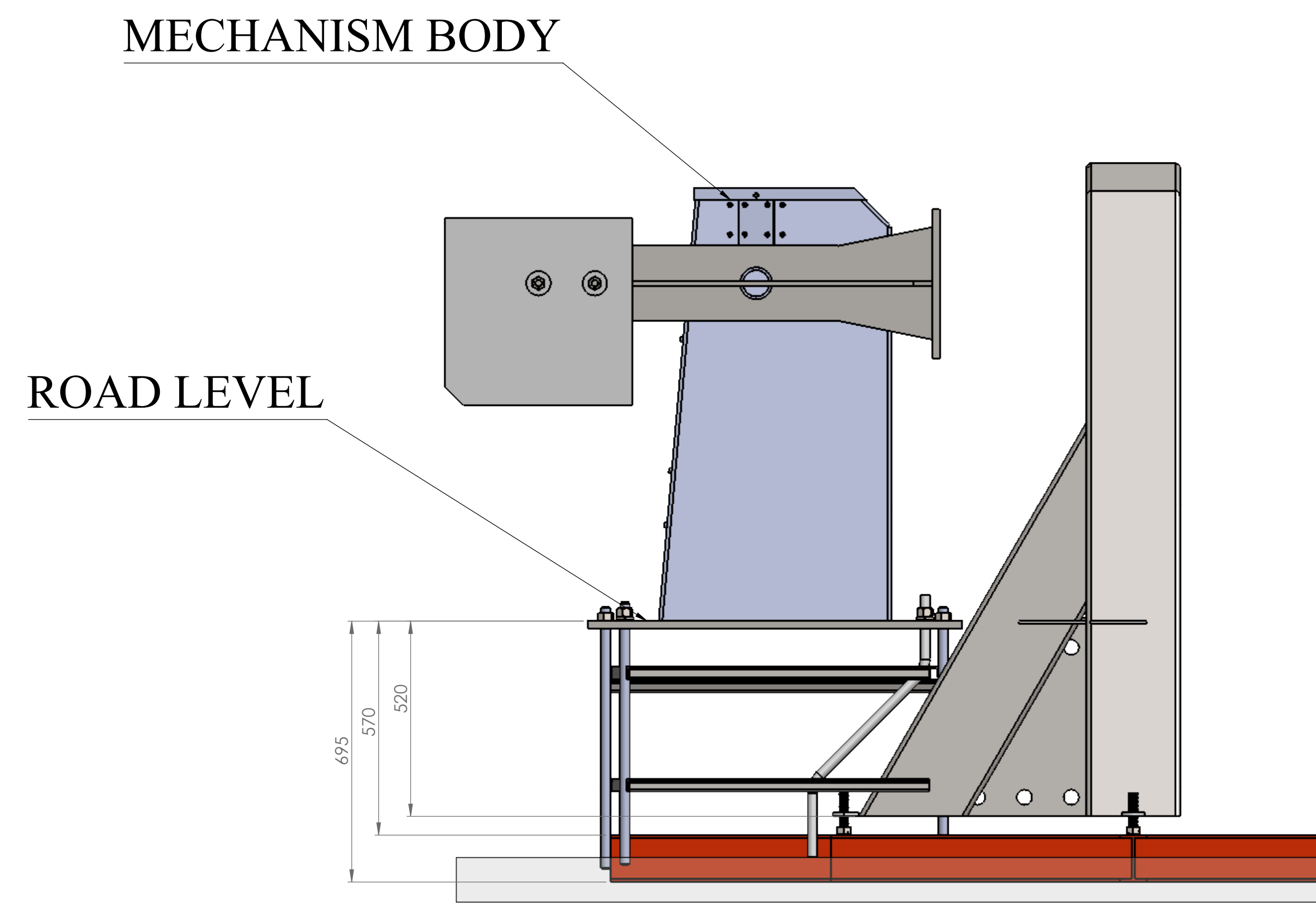
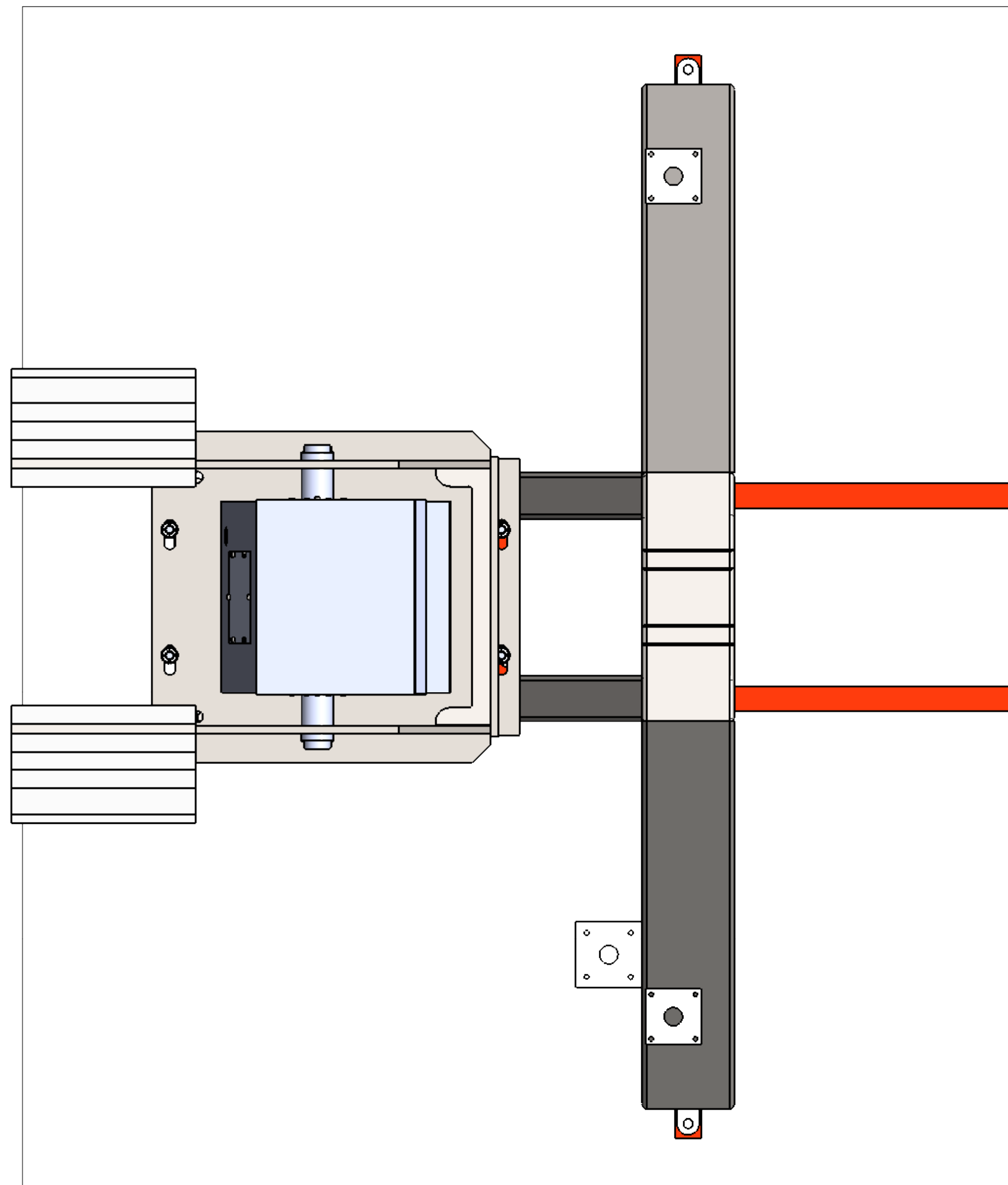


DETAIL B
SCALE 1 : 2

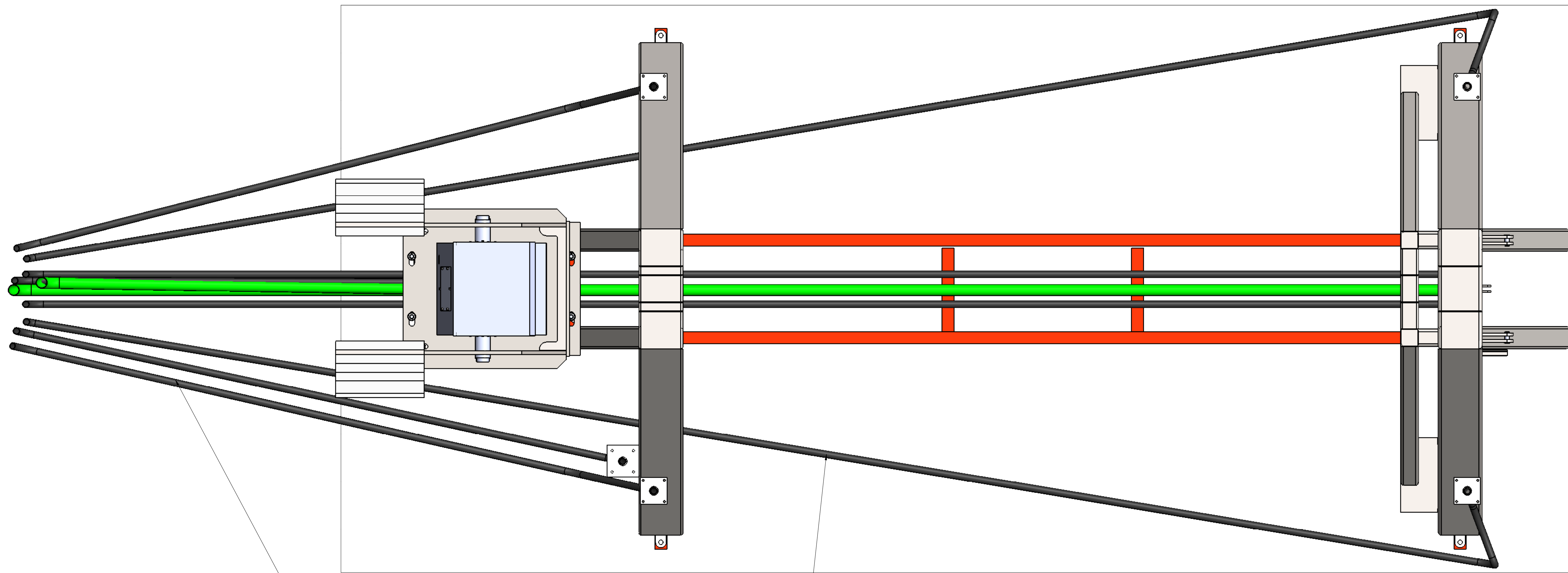
NOTE :-
1-PUT SUPPORTS ON FOUNDATION FRAM
2-MAITAIN LEVEL

24 23 22 21 20 19 18 17 16 15 14 13 12 11 10 9 8 7 6 5 4 3 2 1

T
R
P
N
M
L
K
J
H
G
F
E
D
C
B
A

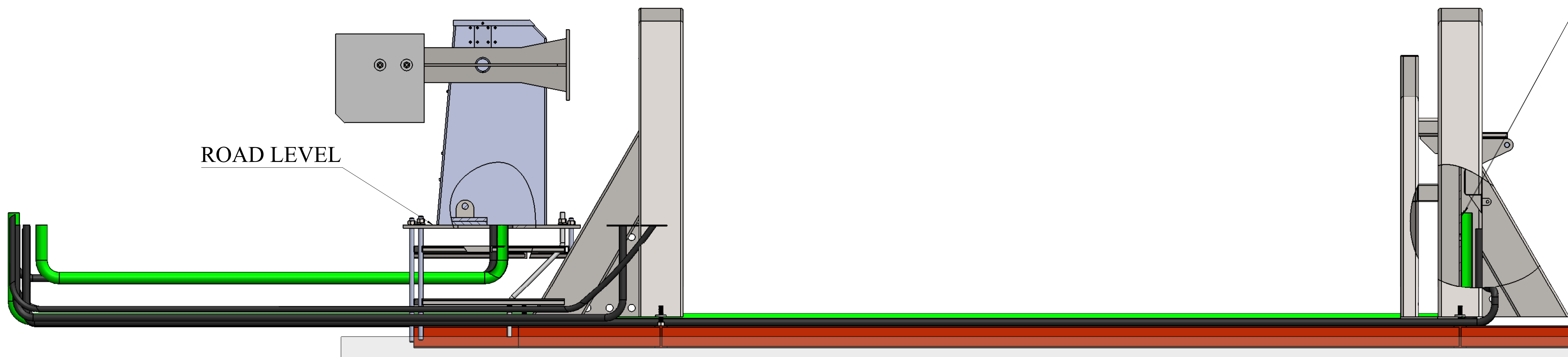


NOTE :-
 1- SET MECHANISM BODY AS PER SOWN
 2- MAITAIN ROAD LEVEL



1 1/2 INCH CONDUIT FOR POWER SUPPLY
AS SHOWN IN BLACK COLOUR
8 NOS.

2 1/2 INCH CONDUIT FOR
HYDRAULIC PIPE AS SHOWN
IN GREEN COLOUR
2 NOS.

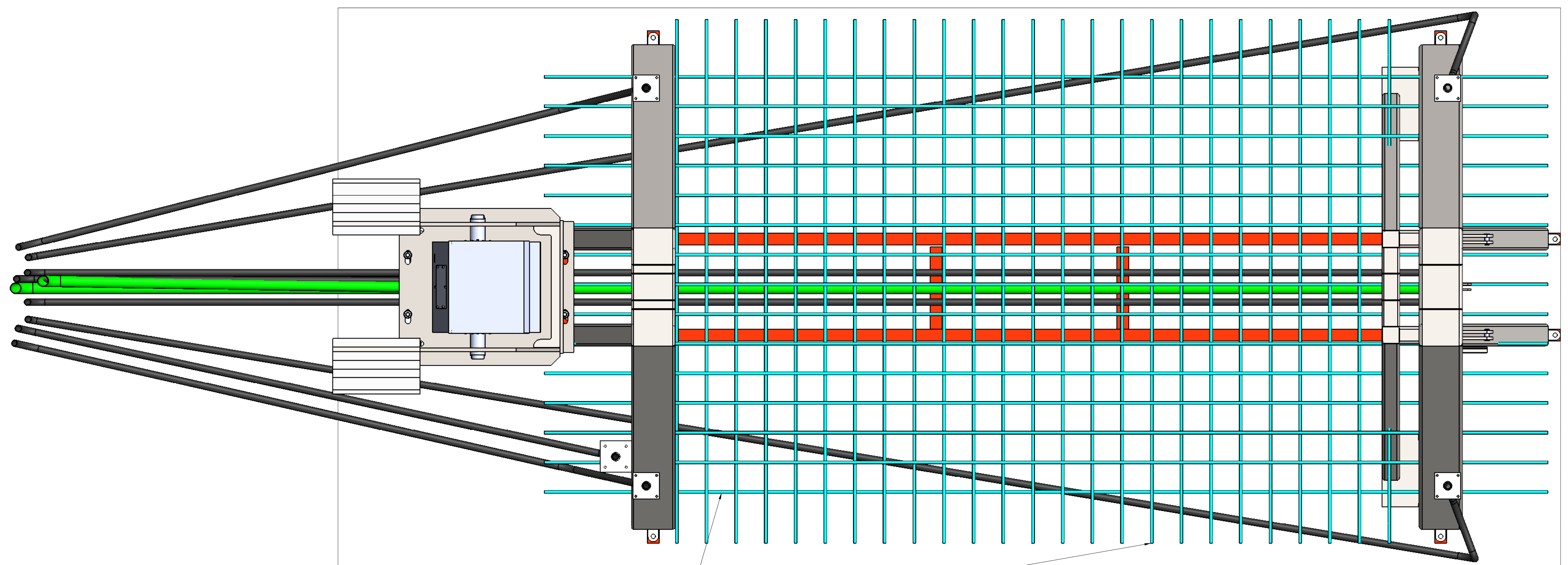


ROAD LEVEL

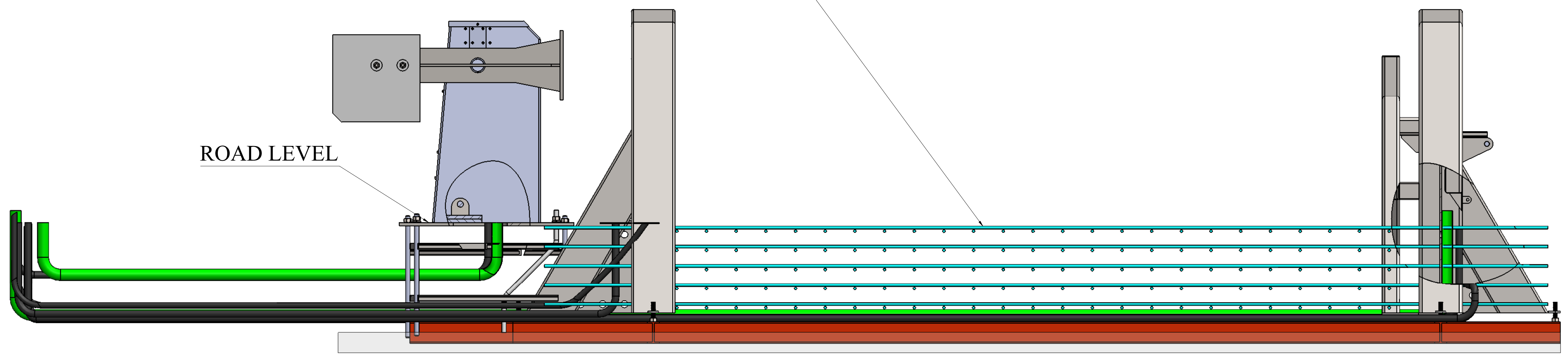
NOTE :-
1-PUT CONDUIT FOR HYSRAULIC AND POWER SUPPLY
2-COMDUIT SHOULD BE MINIMUM
100 MM UPSIDE FROM ROAD LEVEL

24 23 22 21 20 19 18 17 16 15 14 13 12 11 10 9 8 7 6 5 4 3 2 1

T
R
P
N
M
L
K
J
H
G
F
E
D
C
B
A



TMT BAR



ROAD LEVEL

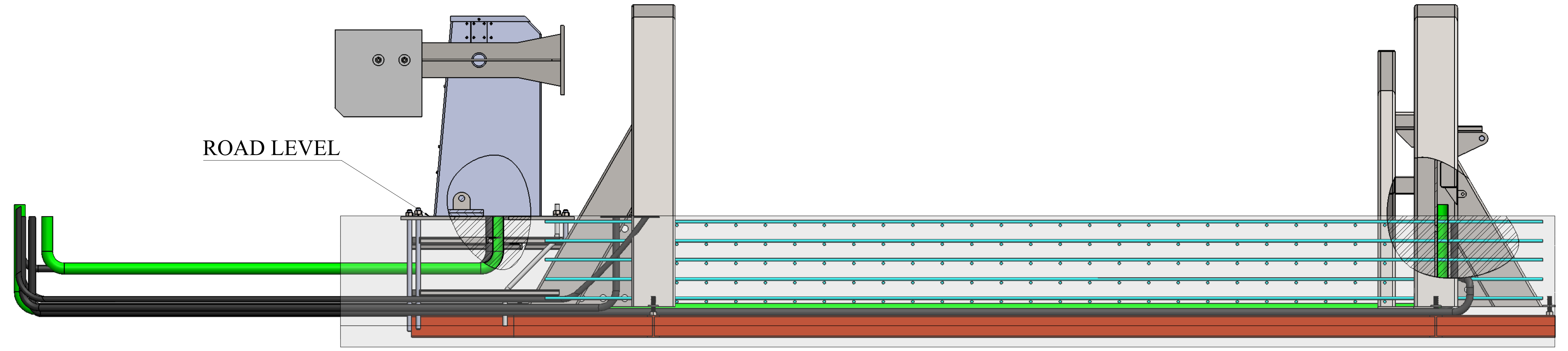
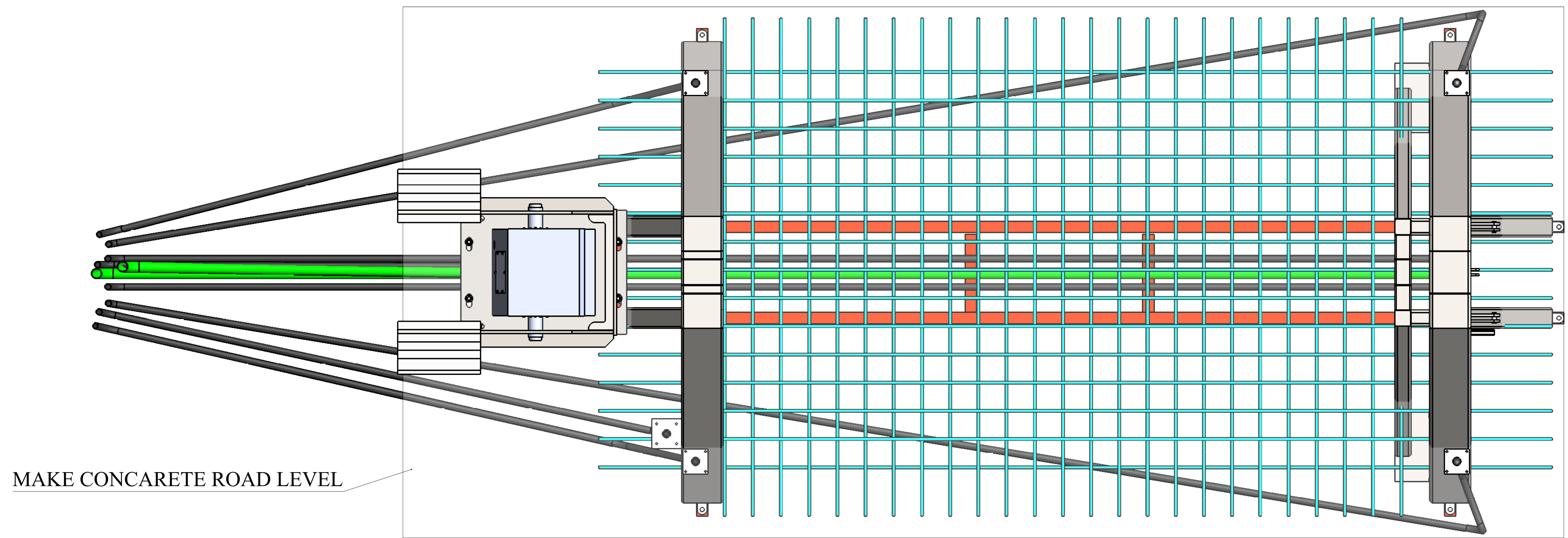
NOTE :-
1-DIA 16 TMT BAR FOR FOUNDATON

24 23 22 21 20 19 18 17 16 15 14 13 12 11 10 9 8 7 6 5 4 3 2 1

A
B
C
D
E
F
G
H
J
K
L
M
N
P
R
T

24 23 22 21 20 19 18 17 16 15 14 13 12 11 10 9 8 7 6 5 4 3 2 1

T R P N M L K J H G F E D C B A



NOTE :-
1-CONCRETE THRU ROAD LEVEL

24 23 22 21 20 19 18 17 16 15 14 13 12 11 10 9 8 7 6 5 4 3 2 1

T R P N M L K J H G F E D C B A